



HARDWARE

PART NUMBER	TC-620 XPe	TC-620 CE
CPU	VIA 800MHz	VIA 800MHz
ChipSet	8237R	8237R
RAM	DDR 333 256MB (Up to 1GB)	DDR 333 128MB (Up to 1GB)
Flash Memory	512MB DOM	32MB DOM
Video	Up to 2048x1536 32bit true color	Up to 1600x1200 32bit true color
Audio	AC97 2.2 compliant , Microphone-in & Speaker out	
Networking	10/100 BaseT Ethernet , PXE supported	
Serial	2 x RS-232 DSUB 9-pin	
Parallel	DSUB 25-pin	
USB	2 xUSB2.0 (Front), 2x USB2.0(back)	
PS/2	1 x keyboard & 1 x Mouse port	
PCI Slot	1 x PCI expansion slot / USB Wireless LAN (can be built-in optional)	
Dimension	220mm(H)x 24mm(W)x155mm(D)	
Power Adapter	Input AC 100/240 Volts,50~60Hz/ Output DC 12V, 4.2A	

SOFTWARE

PART NUMBER	TC-620 XPe	TC-620 CE
Operation System	Windows XPe SP2	WinCE 5.0
Client Software	ICA / RDP	
Windows Media Player	Included	
Web Browser	Included	
Shockwave Flash	Included	N/A
Macromedia Flash player	Included	N/A
VNC shadowing	Included	Included
JAVA / JVM	Support	N/A
Adobe Acrobat Reader	Support	N/A
PXE	Included	
LPD	Print Services for Unix	Print Services for Unix
RAM Disk	Yes	N/A
EFW Manager	Yes	N/A
Firmware Upgrade via USB disk	Yes	N/A
Terminal Emulation (Option)	IBM: 3270, 5250 for Display and Printer Digital: VT52, VT100, VT220-7, VT220-8, VT320-7, VT320-8, VT420-7, VT420-8, VT525-7, VT525-8 ANSI: SCO ANSI, BBS ANSI, AT 386, AXTERM, LINUX, XTERM, WYSE 370 General Terminals: TANDEM, HP DG, SIEMENS, IBM 3151ASCII terminals: WYSE 50, WYSE 50+, WYSE 60, TVI 910+, TVI 920, TVI 925, TVI 950, TVI 955, ADDS VP A2, HZ 1500	
Management Tool	Axus WinClient Remote Manager	

*Specification subject to change without notice. All trademarks or registered trademarks are properties of their respective owners.



AXUS Microsystems Inc.
12F., No.800, Chung Cheng Rd., Chung Ho City Taipei Hsien, Taiwan, R.O.C.
Tel:+886-2-32348686 Fax:+886-2-32341515 Web:www.axus.com.tw

AXUS Thin Clients - The Flexible Solution

Your Thin Client resource and OEM partner

AXUS TC620 XPe/CE

- > Optimal Cost-Saving
- > Fast and Easy
- > Security
- > Wireless
- > Smart Card Reader
- > Flexible Expansions



www.axus.com.tw

Your best choice ever for thin clients!

AXUS TC620 are suitable in the Microsoft Windows Terminal Server environment, as well as for use in Citrix MetaFrame, Linux-Unix-Server and even mainframe environments across a wired or wireless network. The bare-bone AXUS thin clients are also available to provide you with more flexibilities. AXUS Thin Clients always deliver outstanding performance for any application.



More Expansions

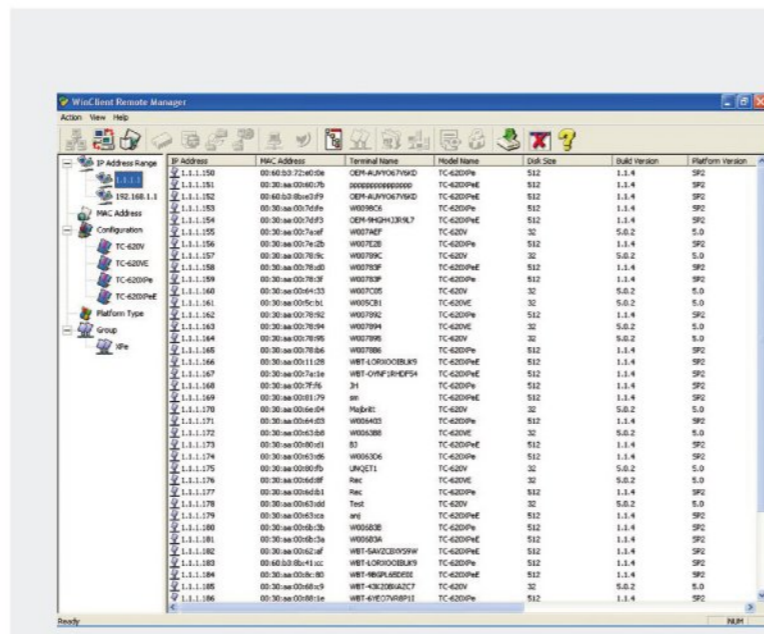
AXUS TC620 offers you more expansions than others, including LAN port, 4 USB ports, Audio Out/Mic In, serial, parallel, PS/2 keyboard and mouse. Plus support for internal USB wireless networking and smart card reader. Compact size doesn't mean to suffer any expansions.

AXUS WinClient Remote Manager – Get on hand within 10 minutes

The free central management tool bundled with every AXUS TC620, is the most robust thin client tool available. Administrator can maintain and manage the TC620 remotely, effortlessly, and centrally. The friendly graphic interface enables administrators to learn the course within 10 minutes.

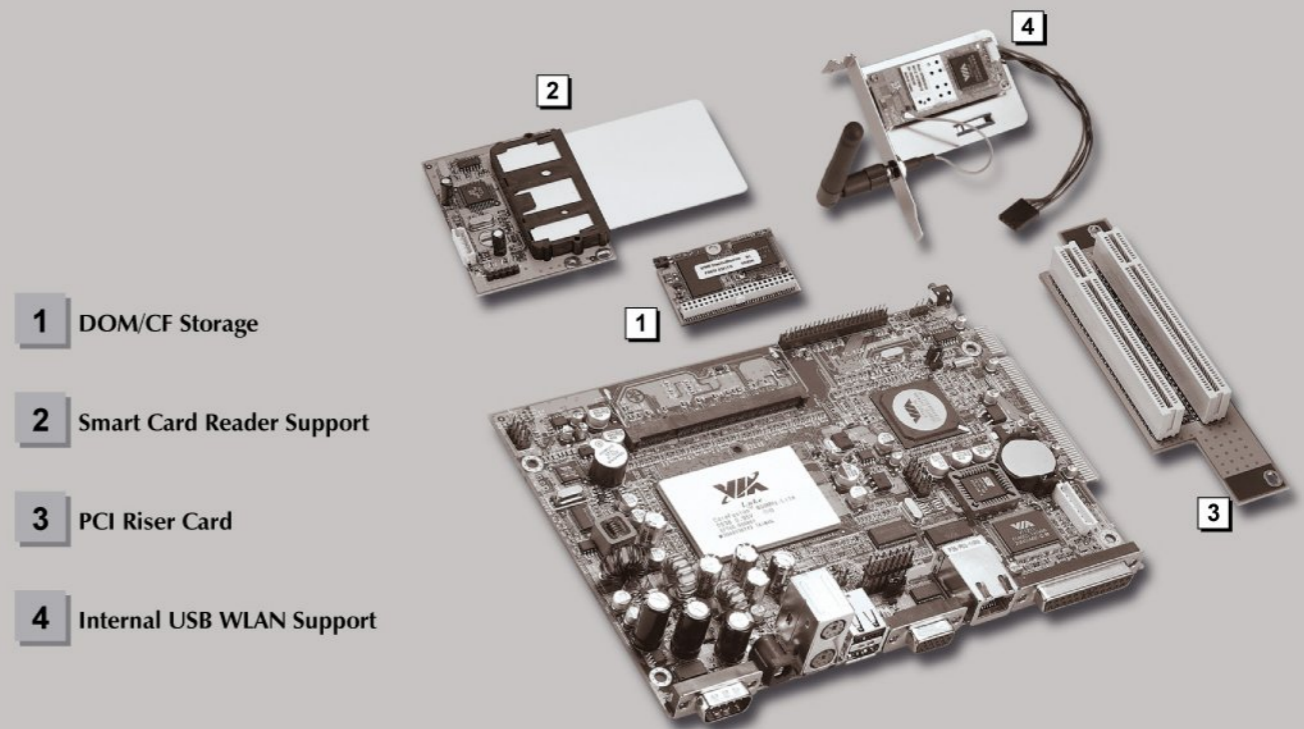
Key Features of AXUS WinClient Remote Manager

- Discover all TC620 on the network. Easy to manage or control the thin clients on Remote Sites.
- WRM can backup all the connections and properties from one of the clients and upload to another if necessary.
- Remotely configure client's properties and connections
- Upgrade the firmware to single/multiple TC620 units) via FTP on WRM.
- Indicate the connections and properties of all the TC620 on the LAN.
- Remotely power-on/power-off the single/multiple TC620.



**The Flexible Thin Client Solutions
AXUS Thin Clients**

**AXUS
TC620 XPe / CE**



- 1 DOM/CF Storage
- 2 Smart Card Reader Support
- 3 PCI Riser Card
- 4 Internal USB WLAN Support

Diverse Application for a Barebone

AXUS thin clients are ideal for a range of diverse application environments, including banks, call centers, educational institutions, hospitals, and shops etc.